

KanexPro®

SDI-EXTFIBERPRO



Extend 3G/HD-SDI Signals on a Single Mode Optical Extender

User Manual
Version 1.0

Content

Features	3
Fiber to SDI	4
Front Panel.....	4
Rear Panel	5
Side Panel.....	5
SDI to Fiber	6
Front Panel.....	6
Rear Panel	6
SFP Connector.....	7
Button/LED Indicate	8
Installation	9
Package Contents	9
Specifications	10
Firmware Upload	11
Update List	13
Warranty.....	13

Introduction

The KanexPro Fiber Optic SDI Extender is a simple extender designed for extending 3G, SD, HD-SDI signals over fiber up to a distance of 6.2 miles (10 Kilometers). Supporting resolutions up to HD 1080p/60. The fiber extender uses pluggable and interchangeable fiber SFP design with LC connector.

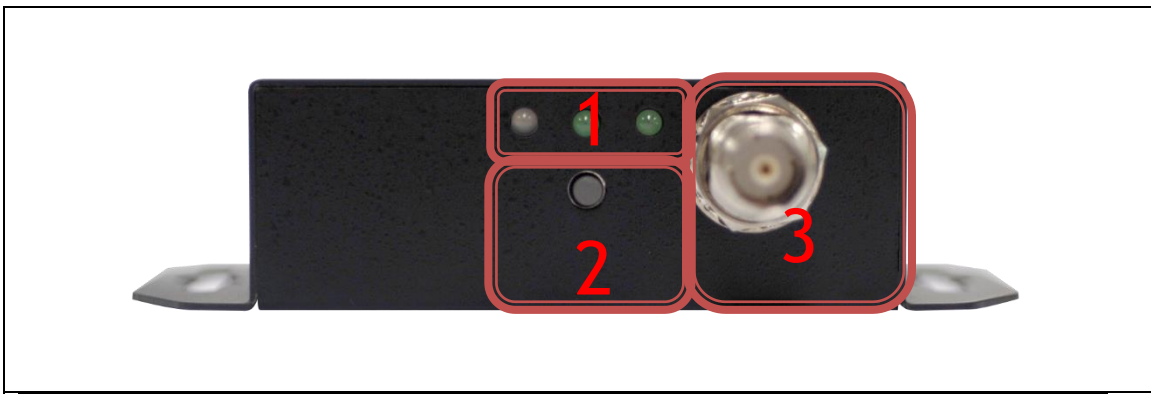
Features

- Convert and Extend one input to Fiber LC
- Ideal for long haul transmissions
- Built-in signal equalizer & re-clock function
- Auto-sensing for 3G/HD/SD-SDI signals
- SDI Supported HD formats:
- 720p/50 & 60
- 1080i/50 & 60
- 1080p/24, 25, 30, 50 & 60
- SDI video formats: 525i & 625i SD D1
- Audio format support up to 8-channel@24 bit, 48KHz
- Ultra-low power consumption
- Compact & rugged housing
- Locking power supply & mounting ears
- PC-USB port for firmware upgrade



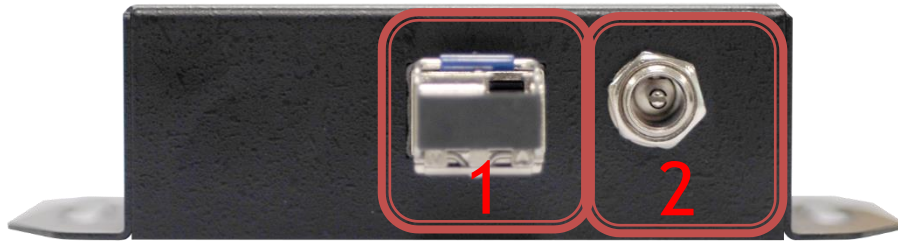
Fiber to SDI

Front Panel



Sr.	Component	Function
1	LED	The LEDs indicates Output Format (SD/HD/3G)
2	Input Source	Select Input Source
3	SDI Output Port	From your SDI Display Device plug into this port

Rear Panel



NO	Component	Function
1	Fiber Input Port	Insert fiber cable to the Fiber Input
2	Power Jack	Plug into supplied power adapter

Side Panel



NO	Component	Function
1	USB port	Upgrade firmware

SDI to Fiber

Front Panel



NO	Component	Function
1	Fiber Output port	Insert fiber cable to Fiber Output
2	LED	The LEDs indicates Output Format (SD/HD/3G)
3	Input Source	Select Input Source
4	SDI Output Port	Form your SDI Display Device plug into this port

Rear Panel





NO	Component	Function
1	SDI Input port	Connect SDI input source
2	Power Jack	The Power adapter plug into here.

SFP Connector

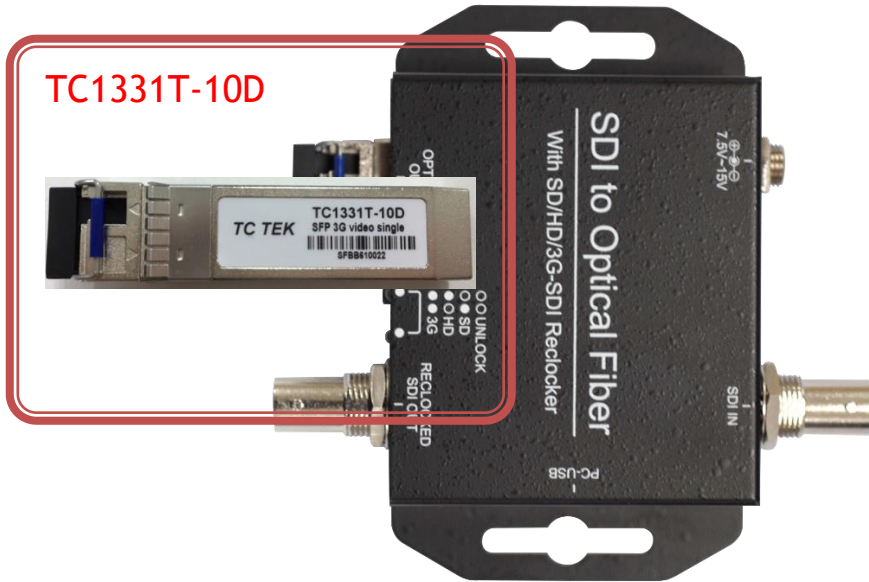
1. TX

	
<p>TC1331T-10D</p>	<p>It indicate the trasmitter SFP</p>

2. RX

	
<p>TC31R-D</p>	<p>It indicate the Reciver SFP</p>

3. SPF Installation Diagram:



Button/LED Indicate

1. Input Source Select.

LED Indicate	Function
●	SDI Un-Locked
●	SDI Locked

2. Input Format LED Indicate

LED Indicate	Function
○ ○	NO SIGNAL
○ ●	SD
● ○	HD
● ●	3G

Installation

The SDI-EXTFIBERPRO installation consists of the following:

- Disconnect +12DC adaptor to converter.
- Connect Video Source (SDI/Optic Fiber) to the SDI/Fiber Connector.
- Connect SDI Equipment or Fiber Cable to the BNCs connector/LC connector
- Connect the +12DC adaptor to the converter.

Package Contents

The SDI-EXTFIBERPRO package contains the following items:

- User Manual x 1
- +12 DC Adapter x 1
- SDI2FIBER Converter x 1
- FIBER2SDI Converter x1
- SFP (TX and RX) x 1

Specifications

DESCRIPTION	
SDI Format	SD-SDI, HD-SDI & 3G-SDI
SDI Transition Rate	2.970Gb/s, 1.485Gb/s and 270Mb/s
Coaxial Cable Type	RG6/RG59(75Ω)
Cable Equalization	3G: 393ft of RG6/ 330m of RG59 HD: 656ft of RG6/ 460ft of RG59 SD: 1312ft of RG6/ 918ft of RG59 <i>*1 RG6: CANARE L-5CFB Cable / RG59: Belden 9275 Cable</i> <i>*2 Cable Length Performance: Depending on SDI Signal and Cable Quality</i>
Firmware Updates	Via Mini-USB
Input	1 x Fiber, 1xSDI
Output	1 x BNC [SDI], 1xFiber, 1 local SDI
BNC Connector	3G 75 Ω inter-locked socket
LC Connector	--
USB Connector	Mini-USB
Bottom	Input Source
Housing	SECC
Dimension	L:4in x W:2.50 xH:1in
Power Source	Power Adapter: AC 100 ~ 240 V/DC (+6 ~ 15 V)
Operation Temperature	0~50°C [32~114°F]
Storage Temperature	-20~+60°C

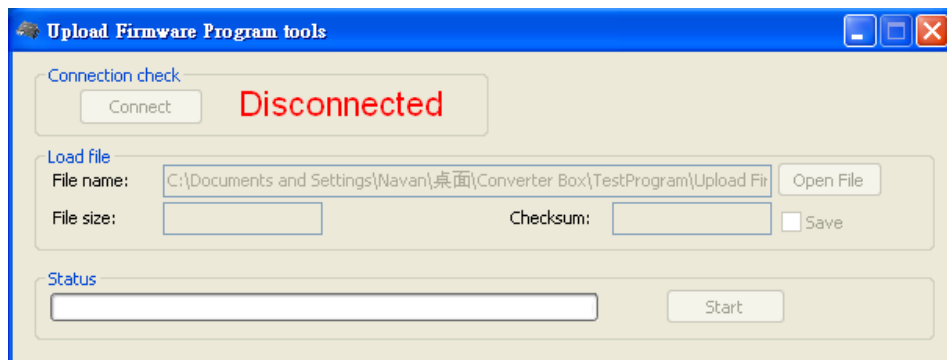
Firmware Upload

- Firmware is upgradable in the field using the integrated USB port

How to Perform Firmware Upgrade:

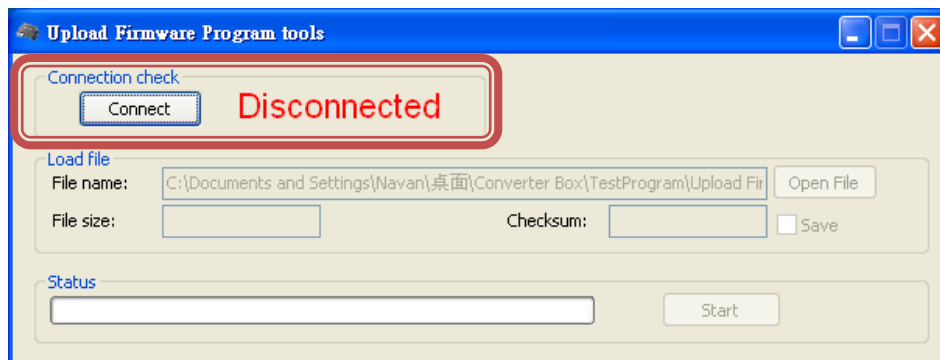
Step 1.

Open Upload Firmware Program tools.exe and connect Converter to PC by USB Cable.



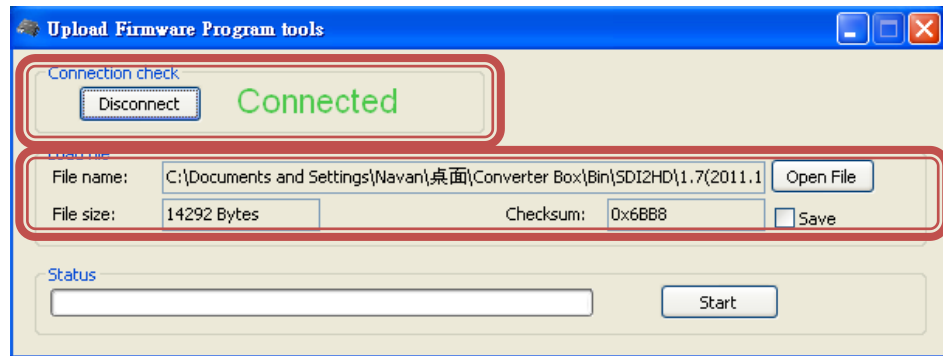
Step 2.

Plug and un-plug "DC adapter" to power on/off the converter box (the connection check status will be changed to "Connect")



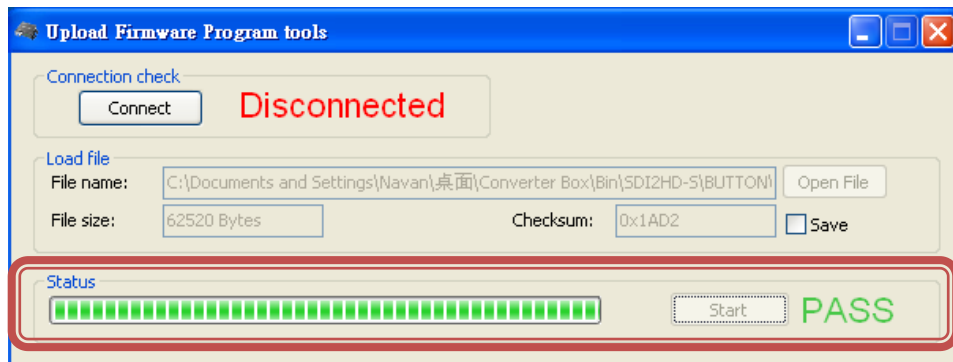
Step 3.

Plug and un-plug “DC adapter” again (the connection check status will be changed to “Connected”) and Please click the Open File button to select the firmware bin file.



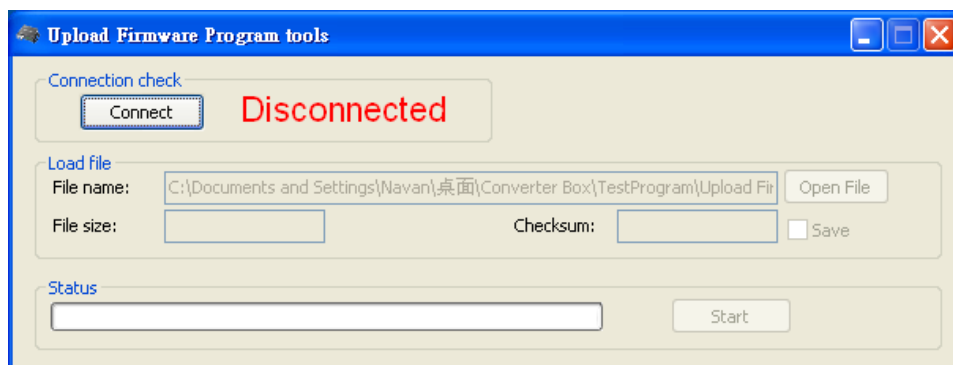
Step 4.

Please click “Start’ Button to proceed with new firmware programming. The PASS message will appear when the procedures finished.



Step 5.

Close Upload Firmware Program tools



Update List

Data	Version	Command
2013.07.29	V1.0	1. Release

Warranty

A. LIMITED WARRANTY

KanexPro™ warrants that (a) its products (the “Product”) will perform greatly in agreement with the accompanying written materials for a period of 36 months (3 full years) from the date of receipt and (b) that the product will be free from defects in materials and workmanship under normal use and service for a period of 3 years.

B. CUSTOMER REMEDIES

KanexPro’s entire liability and Customer’s exclusive remedy shall be, at KanexPro option, either return of the price paid for the product, or repair or replacement of the Product that does not meet this Limited Warranty and which is returned to KanexPro with a copy of customers’ receipt. This Limited Warranty is void if failure of the Product has resulted from accident, abuse, or misapplication. Any replacement Product will be warranted for the remainder of the original warranty period of 3 years, whichever is longer.

C. NO OTHER WARRANTIES

To the maximum extent permitted by applicable law, KanexPro disclaims all other warranties, either express or implied, including, but not limited to implied warranties of merchantability and fitness for a particular purpose, with regard to the product and any related written materials. This limited warranty gives customers specific legal rights. Customers may have other rights depending on the jurisdiction.

D. NO LIABILITY FOR DAMAGES

To the maximum extent permitted by applicable law, in no event shall KanexPro be liable for any damages whatsoever (including without limitation, special, incidental, consequential, or indirect damages for personal injury, loss of business profits, business interruption, loss of business information, or any other pecuniary loss) arising out of the use of or inability to use this product, even if KanexPro has been advised of the possibility of such damages.

KanexPro[®]

1405 pioneer street
Brea, CA 92821