

KanexPro®

Point to Point Extender
Cascade Version



MPN: EXT-HDMICAS70M



• Important Safety Notice

- 1. Do not mix up HDMI to RJ45 transmitter to HDMI reciever before installation.
- 2. Do not hot plug when it is working.
- 3. Use DC5V/2A power supply only. Make sure specification matched if using 3rd party adapters
- 4. Static electricity will cause damage of the device, please do ESD protection when using the device.

• Introduction

This HDMI Extender includes a transmitter unit and a receiver unit, allows HDMI signal to be transmitted up to 70 meters at 4K resolution using a CAT6/6A/7 network cable. It is perfect for outdoor advertising, video clips, monitor system, home entertainment, and conference, etc. Featuring an RS45 loop-out, the receiver (RX) can be cascaded up to 10 times.

• Features

- 1. Zero Latency.
- 2. 4K@60HZ HDMI signal can be transmitted 70 meters through a CAT6/6A/7 network cable.
- 3. Supports up to 10 receivers in cascade, auto adapt to display resolution
- 4. The receiver can extract the digital audio from the transmitter through the S/PDIF port.

- 5. Supports audio formats (Dolby TrueHD 7.1CH/Dolby Digital 5.1CH)
- 6. Supports HDR (YUV 4:4:4), EDID passback.
- 7. Transmitter support one HDMI loop-out.
- 8. Support bi-directional IR passback function (20-60KHz), cascade when 10 receivers are available.
- 9. Lightning Protection, Surge Protection, ESD Protection.

• Package Contents

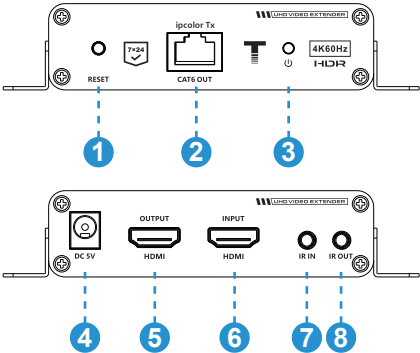
- 1. 1x Transmitter Unit
- 2. 1x Receiver Unit
- 3. 2x DC5V/2A power supply
- 4. 1x User Manual
- 5. 1x IR Blaster Extension Cable
- 6. 1x IR Receiver Extension Cable
- 7. 8x Mounting Brackets
- 8. 18x Screw

• Installation Requirements

- 1. HDMI source device (compute graphics card, DVD, PS3), HD monitoring equipment.
- 2. HDMI display device like SDTV, HDTV, projector with HDMI port.
- 3. UTP/STP CAT6/CAT6A/CAT7 cable. Follow standard IEEE-568B, It is recommended to select a network cable with less loss and crosstalk.

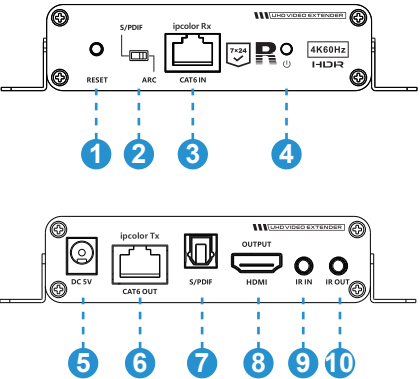
• Interfaces

- 1. 1x Transmitter (TX)



1	RESET BUTTON	Press to restart the device
2	RJ45 SIGNAL OUTPUT	Connect with network cable
3	POWER/SIGNAL INDICATOR	When there is power and no HDMI signal, the indicator will flash, when there is HDMI signal, the indicator will light solid blue
4	DC5V INPUT	Connect with DC5V/2A power adapter
5	HDMI OUTPUT	Connect with HDMI display device
6	HDMI INPUT	Connect with HDMI source device
7	IR IN	Connect with IR receiver extension cable, please make sure the remote control used is within the effective range
8	IR OUT	Connect with IR blaster extension cable, please get closer to the source device while using

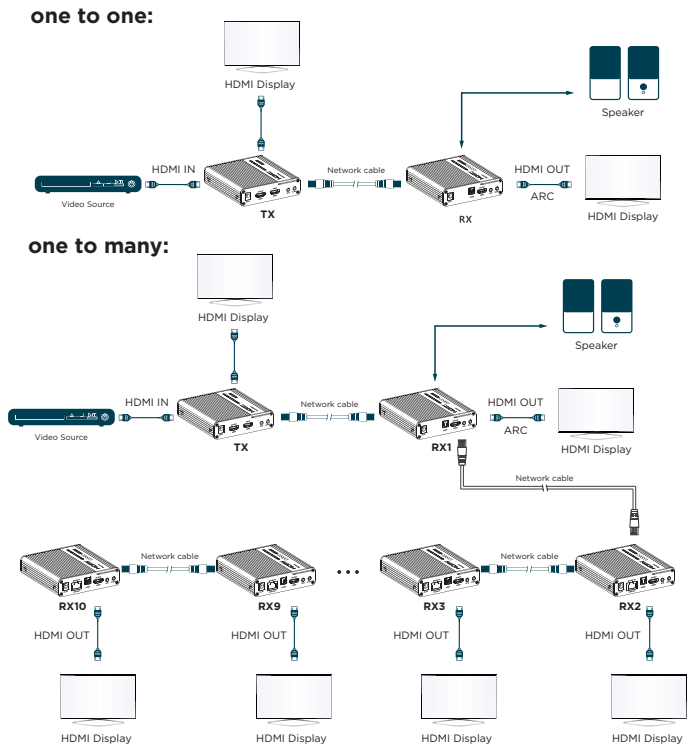
- 2. 1x Receiver (RX)



1	RESET BUTTON	Press to restart the device
2	AUDIO SWITCH	Choose to decode audio from HDMI or ARC output from fiber optic interface
3	RJ45 SIGNAL INPUT	Connect with network cable
4	POWER/SIGNAL INDICATOR	When there is power and no HDMI signal, the indicator will flash, when there is HDMI signal, the indicator will light solid blue
5	DC5V INPUT	Connect with DC5V/2A power adapter
6	RJ45 OUTPUT	Connect with network cable
7	S/PDIF OUT	Output digital audio signal
8	HDMI OUTPUT	Connect with HDMI display device
9	IR IN	Connect with IR receiver extension cable, please make sure the remote control used is within the effective range
10	IR OUT	Connect with IR blaster extension cable, please get closer to the source device while using

• Installation Procedures

1. Connection



[NOTE]: To ensure the quality of signal transmission, please use network cable within 50 meters when cascaded.

Follow the standard of IEEE-568B, It is recommended to select network cable with less loss and crosstalk

- 1-Orange/white
- 2-Orange
- 3-Green/white
- 4-Blue
- 5-Blue/white
- 6-Green
- 7-Brown/white
- 8-Brown

2. Connection Instruction

- 1) Connect the source devive to the HDMI IN port of the transmitter with an HDMI cable, and connect the HDMI OUT port of the receiver to the display device with another HDMI cable.
- 2) Connect CAT OUT port of the transmitter and the CAT IN port of the receiver via a network cable (CAT6/CAT6A/CAT7).
- 3) If using HDMI loop out, connect the display device to the HDMI OUT port of the trnsmitter.
- 4) Plug the power supply into the device to get started.

[NOTE]: It is recommended to use a length range within 2-70m network cable. If the cable is too short, there may be no display output because the signal is too strong. If the cable is too long, the outout may have poor quality.

3. IR User Guide

- 1) IR blaster extension cable should plug in the IR OUT port of the transmitter and receiver.
- 2) The emitter of the IR blaster extension cable should be as close as possible to the IR receiveing window of the source device.
- 3) Face the receiving head of the IR receiver extension cable to the user for convenient remote control.

• FAQ

- Q:** There is no output on screen when all connections are correct?

A: 1) Please make sure the HDMI cables supports 4K x 2K resolution.
2) Please check and make sure the network cable is inserted into the RJ45.
3) Restart the transmitter or receiver by pressing the reset button.
- Q:** Black screen happened on the display/monitor?

A: 1) Check if the length og the cable is within the specified range.
2) Reset the transmitter or rebuild the connection.
- Q:** The display shows unusual color or no sound?

A: 1) Reset the transmitter or receiver or rebuild the connection.
2) Check of the HDMI cables are connected well.
3) Reconnect the network cable.

• Specifications

Items		Specification
Power Supply	Voltage/Current	DC5V/2A
	Power Consumption	TX < 4W RX < 4W
HDMI Performance and Interface	HDMI compliance	HDMI 2.0
	HDCP compliance	HDCP 2.2
	HDMI resolution	480i@60Hz, 480p@60Hz, 576i@50Hz, 576p@50Hz, 720p@50/60Hz, 1080i@50/60Hz, 1080p@50/60Hz, 3840x2160@24/25/30/50/60Hz, 4096x2160@24/25Hz, 1280x960, 1280x800, 1280x768, 1680x1050, 1360x768, 1366x768, 1600x900, 1024x768, 800x600
HDMI Performance and Interface	Support audio formats	LPCM/DTS-Audio/ Dolby Digital 5.1CH
	Input and output TMDS signal	0.7-1.2Vp-p(TMDS)
	Input and output DDC signal	5Vp-p(TTL)
	Input cable length	≤8m(AWG24)
	Output cable length	≤8m(AWG24)
Transmission Distance	CAT6/6A/7	≤70m
Protection Level	Electrostatic protection of the whole machine	1A Contract discharge level 3 1B Air discharge level 3 Implementation of the standard: IEC61000-4-2
Operating Environment	Working Temperature	-20-60℃
	Storage Temperature	-30-70℃
	Humidity (no condensation)	0-90%RH
Body Properties	Dimensions	106.0(L) × 99.0(W) × 26.2(H)mm
	Material	Aluminum alloy + crystal panel
	Treatment process	Grit blast
	Color	Black
	Weight	TX: 210g RX:210g