

KanexPro®

SDI-SDHDXPRO

User Manual

Version1.2



INDEX

Description	3
Feature	3
Connection Diagram	4
Front Panel	5
Rear Panel	5
Dip Switch	6
Specifications	7
Firmware Upload	8
Update List	10
Warranty	10

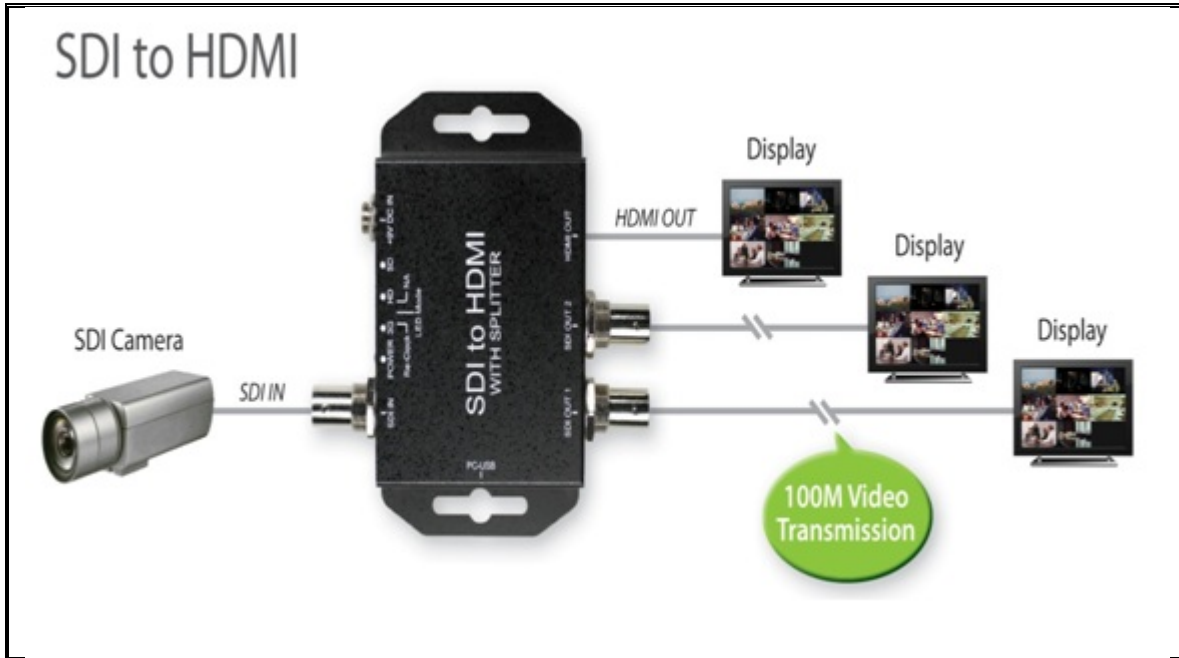
Description

The KanexPro next generation of SDI to HDMI converters are designed for connecting your professional SDI video equipment to any HDMI display or consumer based TV's. It accepts SD, HD or 3G-SDI signals and converts it to HDMI maintaining signal integrity of the original image and resolution. The converter also has two SDI loop output for sending re-clocked SDI signals and connecting to down-stream equipment.

Feature

- Get the highest quality 3G-SDI conversion to HDMI
- Supports 2-channel audio @20 bit,192 KHz audio
- Supports multiple video resolutions: SDI 525i, 625i
- HD: 720p 24, 25,30,50 & 60 Hz.
- HD: 1080i 50 & 60 Hz.
- HD: 1080p 24, 25,30, 50 & 60 Hz.
- Data rates up to 2.97 Gbps
- Supports conversion to SMPTE 425M Level A 1080p 50/59.94/60 4:2:2 10-bit
- SDI Input Cable Length Support - up to 100m
- 3G mode length up to: 130m
- HD mode length up to: 170m
- SD mode length up to: 300m
- One-way SDI output with re-clock function
- Supports cascading of multiple SDI's in application
- Automatically switches between SD, HD and 3 Gb/s SDI standards
- Compact in size, perfect for mobile broadcasting units and users

Application Diagram

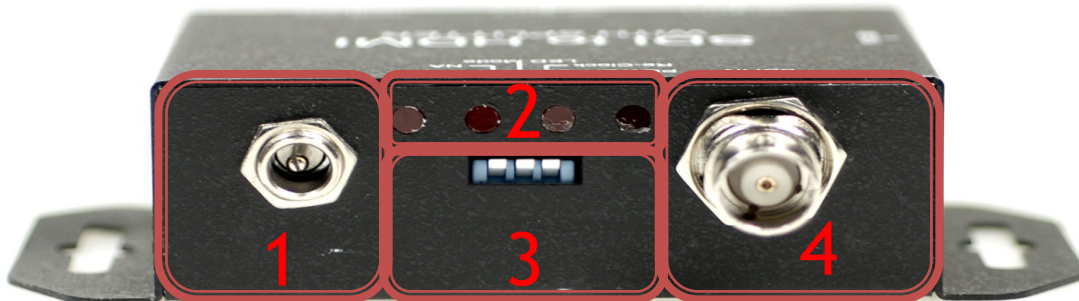


Front Panel



NO	Component	Function
1	SDI Output Port	From your SDI Display Device plug into these ports (Pass Through)
2	HDMI Output port	From your HDMI Display Device plug into this port.

Rear Panel



NO	Component	Function				
1	Power Jack	The Power adapter plug into here.				
2	Power/Locked LED	The LEDs is indicating Signal indicate				
3	Dipswitch	<table border="1" style="margin-left: auto; margin-right: auto;"> <tr> <td></td> <td></td> </tr> <tr> <td>Pin On (↑): Enable</td> <td>Pin OFF (↓): Disable</td> </tr> </table> <p>1.Reclocker 2.LED Mode 3.NA.</p>			Pin On (↑): Enable	Pin OFF (↓): Disable
Pin On (↑): Enable	Pin OFF (↓): Disable					
4	SDI input Port	From your HDMI Source plug into these ports				

Dip Switch

- Re-clock: Receives a signal and retransmits it at a higher level and/or higher power, or onto the other side of an obstruction, so that the signal can cover longer distances.
- LED Mode:
Pin OFF (↓):

Resolution	SD LED	HD LED	3G LED	POWER LED
720 x 480i (NTSC)	○	○	○	●
720 x 576i (PAL)	○	○	●	○
1280 x 720 p50	○	○	●	●
1280 x 720 p60	○	●	○	○
1920 x 1080 i50	○	●	○	●
1920 x 1080 i60	○	●	●	○
1920 x 1080 p24	○	●	●	●
1920 x 1080 p25	●	○	○	○
1920 x 1080 p30	●	○	○	●
1920 x 1080 p50	●	○	●	○
1920 x 1080 p60	●	○	●	●
2048 x 1080 p24	●	●	○	○
2048 x 1080 p25	●	●	○	●
Un-know	○	○	○	○

● : LED ON

○ : LED OFF

Pin On (↑)

Resolution	3G LED	HD LED	SD LED
NTSC / PAL	○	○	●
720p / 1080i / 1080 [24p, 30p]	○	●	○



● : LED ON

○ : LED OFF

● NA:

Specifications

DESCRIPTION	
Support Video Resolution	SD – 720 x 480i / 720 x 576i HD– 1280 x 720 50p/60p 1920 x 1080 50i/60i 1920 x 1080 24p/25p/30p 3G– 1920 x 1080 50p/60p
SDI format	SD-SDI (SMPTE 259M) HD-SDI (SMPTE 292M) 3G-SDI (SMPTE 424M / SMPTE 425M)
Audio Support	2 Channel of Stereo
Re-clock Function	Yes (Dip Switch)
Coaxial Cable Type	RG6/RG59(75Ω)
Cable Equalization	3G: 100m of RG6/ 86m of RG59 HD: 170m of RG6/ 120m of RG59 SD: 400m of RG6/ 280m of RG59 *1 RG6: CANARE L-5CFB Cable / RG59: Belden 9275 Cable *2 Cable Length Performance: Depending on SDI Signal and Cable Quality
Firmware Updates	Via USB
Input	1 x BNC [SDI]
Output	1 x HDMI 2 x BNC [SDI]
BNC Connector	3G 75 Ω inter-locked socket
HDMI Connector	TYPE A [19-pin female]
DIP Switch	3-pin [Re-clock / LED mode / NA]
Housing	SECC
Dimension	L:104mm x W:63.3mm xH:26mm
Power Source	Power Adapter: AC 100 ~ 240 V/DC (+6 ~ 15 V)
Operation Temperature	0~50°C [32~114°F]
Storage Temperature	-20~+60°C

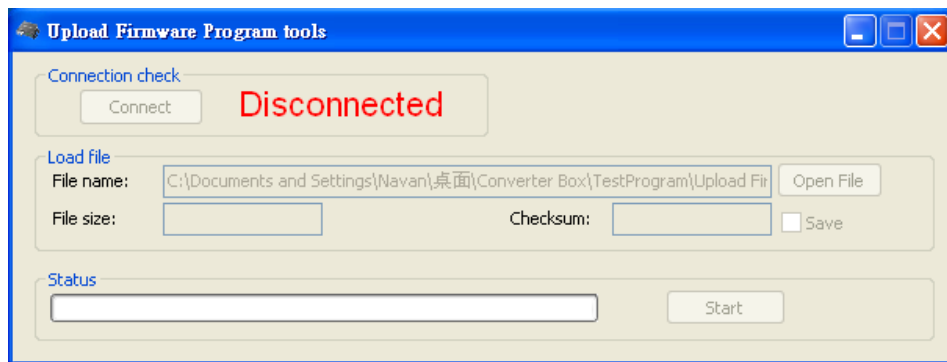
Firmware Upload

- Firmware is upgradable in the field using the integrated USB port

How to Firmware upgrade:

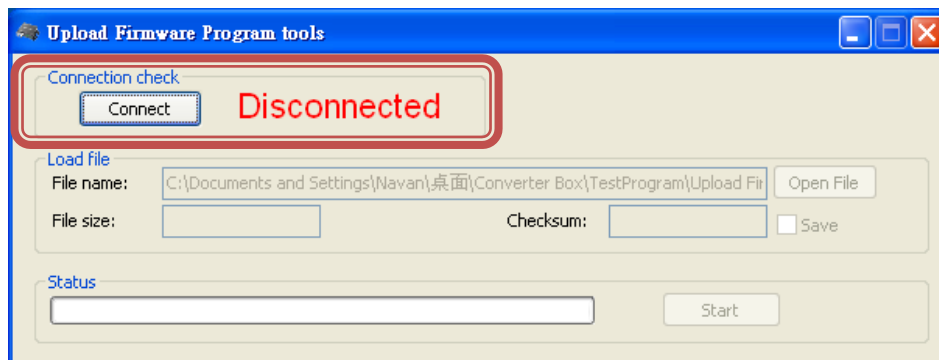
Step 1.

Open Upload Firmware Program tools.exe and connect box to PC by USB Cable.



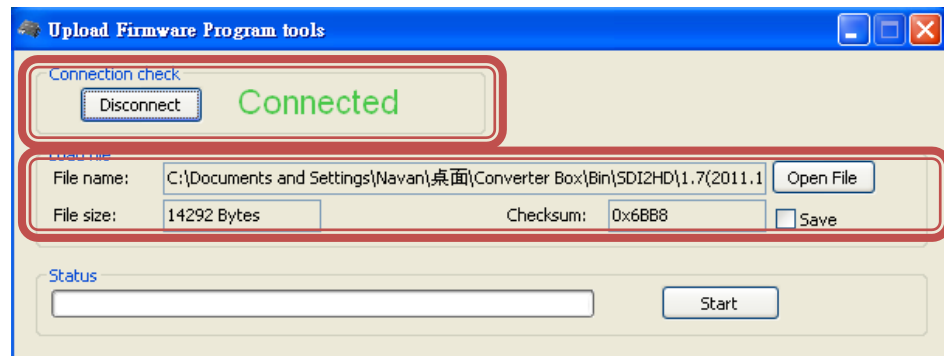
Step 2.

Plug and un-plug "DC adapter" to power on/off the converter box (the connection check status will be changed to "Connect")



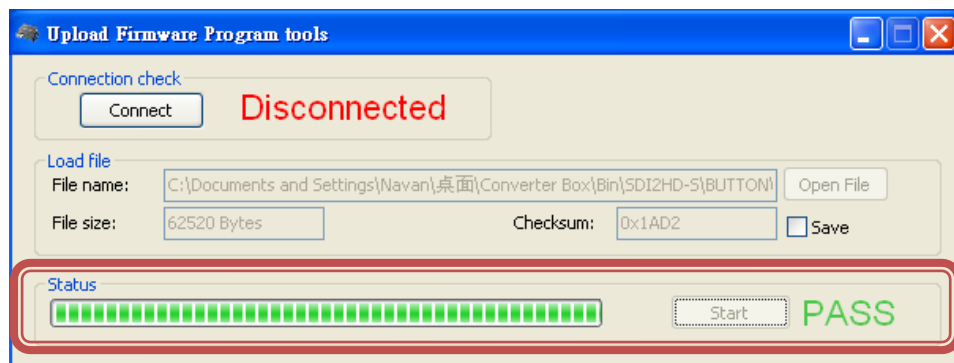
Step 3.

Plug and un-plug “DC adapter” again (the connection check status will be changed to “Connected”) and Please click the Open File button to select the firmware bin file.



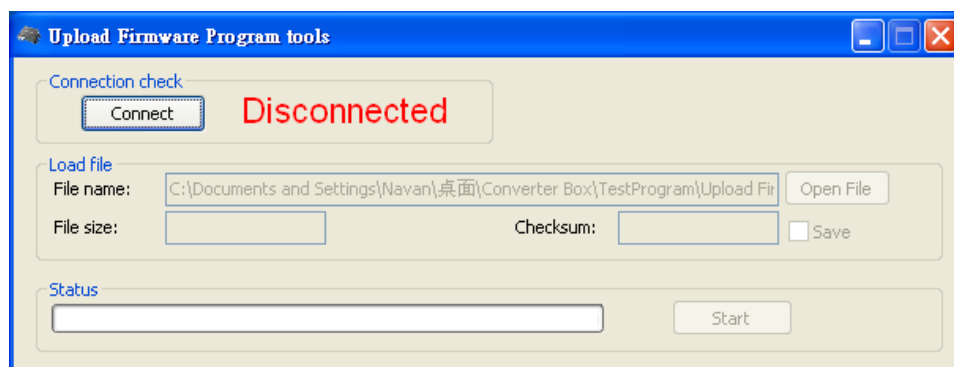
Step 4.

Please click “Start’ Button to proceed with new firmware programming.
The PASS message will appear when the procedures finished.



Step 5.

Close Upload Firmware Program tools



Update List

Data		Version	Command
2013.03.14		V1.1	1. Modify Cable Equalization
2015.03.20		V1.2	1. Change Box Pic

Warranty

A. LIMITED WARRANTY

KanexPro™ warrants that (a) its products (the “Product”) will perform greatly in agreement with the accompanying written materials for a period of 36 months (3 full years) from the date of receipt and (b) that the product will be free from defects in materials and workmanship under normal use and service for a period of 3 years.

B. CUSTOMER REMEDIES

KanexPro’s entire liability and Customer’s exclusive remedy shall be, at KanexPro option, either return of the price paid for the product, or repair or replacement of the Product that does not meet this Limited Warranty and which is returned to KanexPro with a copy of customers’ receipt. This Limited Warranty is void if failure of the Product has resulted from accident, abuse, or misapplication. Any replacement Product will be warranted for the remainder of the original warranty period of 3 years, whichever is longer.

C. NO OTHER WARRANTIES

To the maximum extent permitted by applicable law, KanexPro disclaims all other warranties, either express or implied, including, but not limited to implied warranties of merchantability and fitness for a particular purpose, with regard to the product and any related written materials. This limited warranty gives customers specific legal rights. Customers may have other rights depending on the jurisdiction.

D. NO LIABILITY FOR DAMAGES

To the maximum extent permitted by applicable law, in no event shall KanexPro be liable for any damages whatsoever (including without limitation, special, incidental, consequential, or indirect damages for personal injury, loss of business profits, business interruption, loss of business information, or any other pecuniary loss) arising out of the use of or inability to use this product, even if KanexPro has been advised of the possibility of such damages.

KanexPro[®]

1405 pioneer street

Brea, CA 92821