

# KanexPro®

## SDI-MULTI2SDIPRO



Convert DVI-I, VGA, Component, S-video or Composite to 3G/HD/SD-SDI & HDMI

## User manual

Rev1.0

## Content

Introduction.....	3
Feature .....	3
Front Panel.....	4
Rear Panel .....	5
Side Panel.....	5
DipSwitch/LED Control .....	6
Installation .....	12
Package Contents.....	12
Specifications .....	13
Firmware Upload .....	14
Appendix Table A .....	16
Update List .....	17
Warranty.....	17

## Introduction

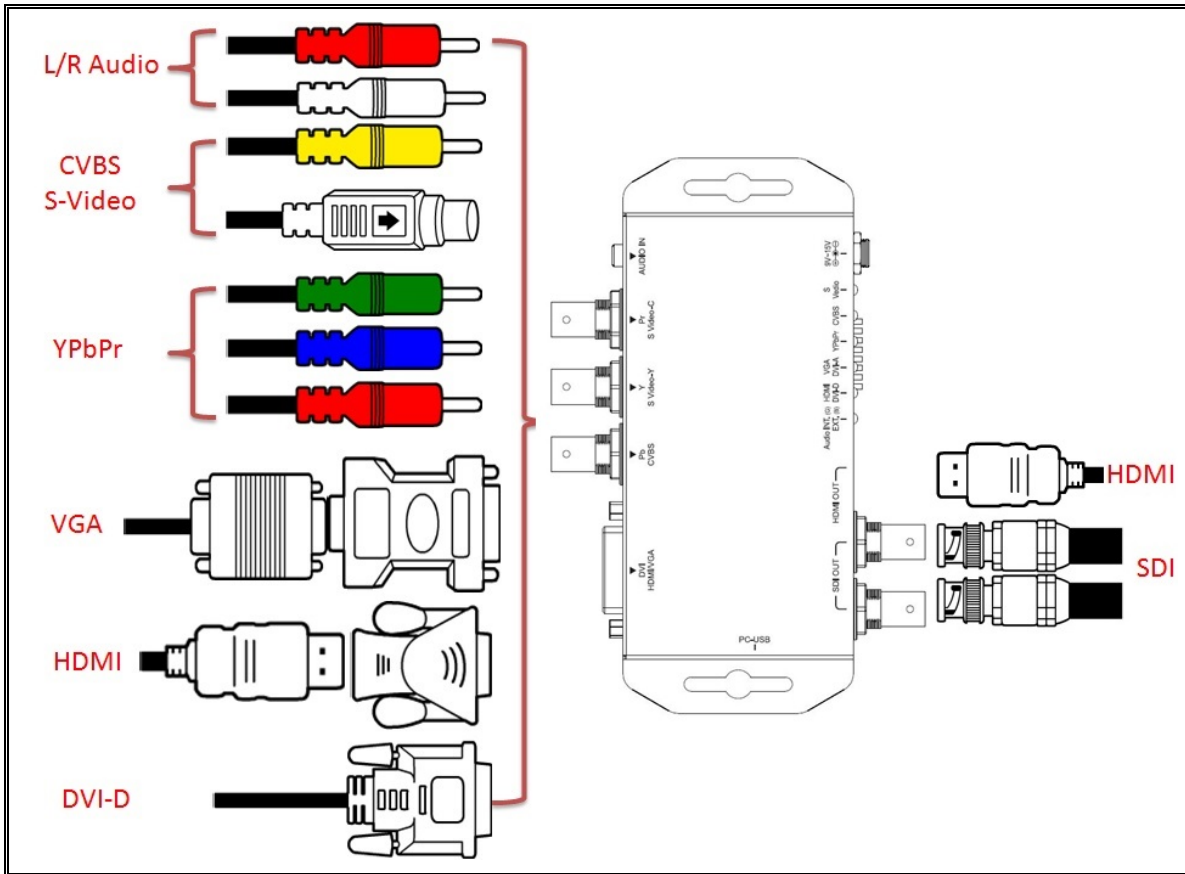
---

The KanexPro multi-cast cross converter provides multiple input conversions from HDMI, DVI-I, VGA, Component, to 3G/HD/SD-SDI & HDMI. It packs a powerful up and down video scaler supporting a bank of resolutions up to 1080p60/59.94Hz and 1080p/29.97Hz.

## Feature

---

- Convert Digital / Analog video to SDI & HDMI
- Powerful up/ down converter scaler
- Built-in anti – aliasing & 3D De-interlace
- Built-in test pattern generator
- Added DIP switch settings for various video resolutions
- Allows region of interest (ROI) – for annotation & quantitative information
- Simultaneous output to 2 x SDI & 1x HDMI
- Audio embedder supports output up to 8Ch/24Bit@48KHz
- Mini –USB port for firmware update
- Locking power supply & mounting ears
- Compact & ruggedized design makes perfect mobile broadcasting hardware



**Front Panel**



NO	Component	Function
1	SDI Output Port	Plug your SDI displays into these ports
2	HDMI output Port	Plug your HDMI display port into this port
3	Input Port/ Audio source LED	The LEDs would indicate Input Ports and Audio Source
4	Dipswitch	Control the Box ( Input Port/Audio/Output

		Format)
5	Power Jack	The Power adapter plug into here

**Rear Panel**



NO	Component	Function
1	Phone Jack	From you Audio Device plug into this port
2	Component/CVBS/S-Video Input Port	From your YPbPr/CVBS/S-Video Device plug into this port
3	DVI-D/DVI-A Input Port	From your DVI-D/DIV-A Device plug into this port

**Side Panel**



NO	Component	Function
1	USB Port	Upgrade firmware/Control Box From PC

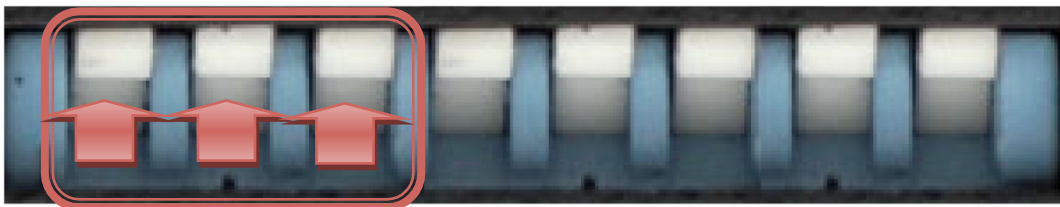
### Dip Switch/LED Control



NO	Component	Function
1	Input Source	Five of kinds input source be support ( DVI-D/DV-A/YPbPr/CVBS/S-Video)
2	Audio Source	Two of kinds Audio input source (Embedded audio/L/R Audio)
3	Output format	Control Box to switch Output Format.

◆ **Input Source:**

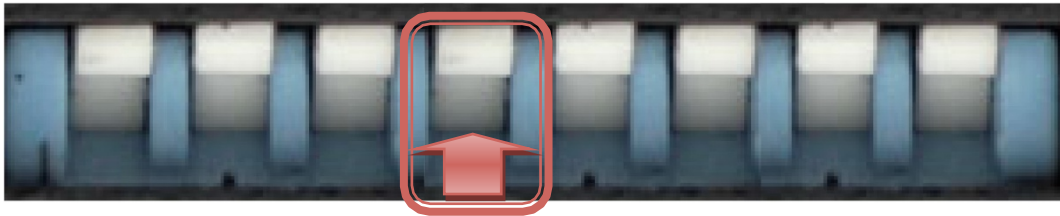
VPC-MX1 Box can choose one of three standard inputSource by DipSwitch.





Input Source	Dipswitch Indicates
DVI-D(HDMI)	↑ ↑ ↑
DVI-A(VGA)	↑ ↑ ↓
YPbPr	↑ ↓ ↑
CVBS	↑ ↓ ↓
S-Video(YC)	↓ ↑ ↑
USB Control	↓ ↓ ↓

◆ **Audio Source:**

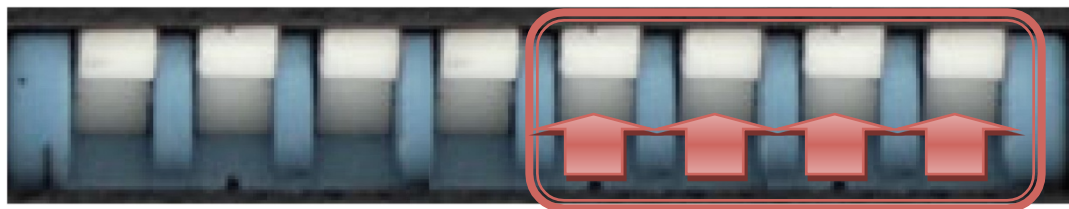
VPC-MX1 Box can be select audio source from L/R Audio.

















Resolution	Dipswitch Indicates
Internal (Default)	
L/R Audio	

◆ **Output Format:**

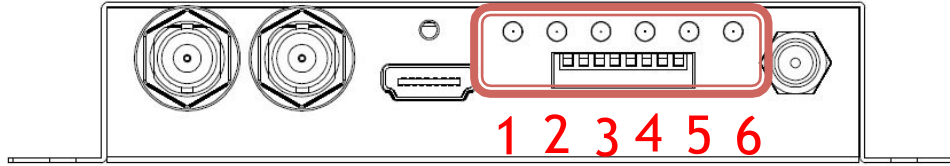
VPC-MX1box can be select 16 of kinds output format.



Resolution	Dipswitch Indicates	Resolution	Dipswitch Indicates
1920x1080p6 0		1920x1080i6 0	
1920x1080p5 9		1920x1080i5 9	
1920x1080p5 0		1920x1080i5 0	
1920x1080p3 0		1280x720p60	
1920x1080p2 9		1280x720p59	
1920x1080p2 5		1280x720p50	
1920x1080p2 4		720x480i59	



◆ LED Indicate:

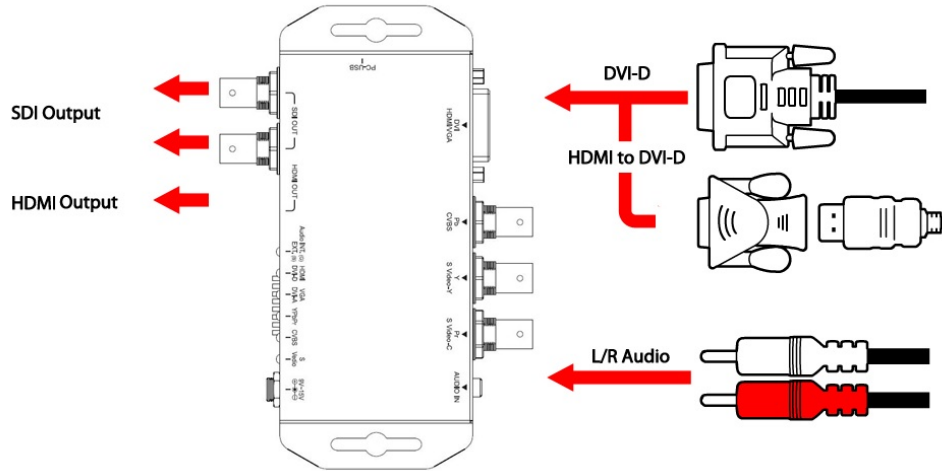


NO	Component	Function
1	Internal/L/R Audio	The LED is indicate Audio Source indicate
2	DVI-D(HDMI)	The LED is indicate DVI-D Signal indicate
3	DVI-A(VGA)	The LED is indicate DVI-A Signal indicate
4	YPbPr	The LEDs is indicate YPbPr Signal indicate
5	CVBS	The LED is indicate CVBS Signal indicate
6	S-Video	The LEDs is indicate S-Video Signal indicate



1. DVI-D + L/R Audio:

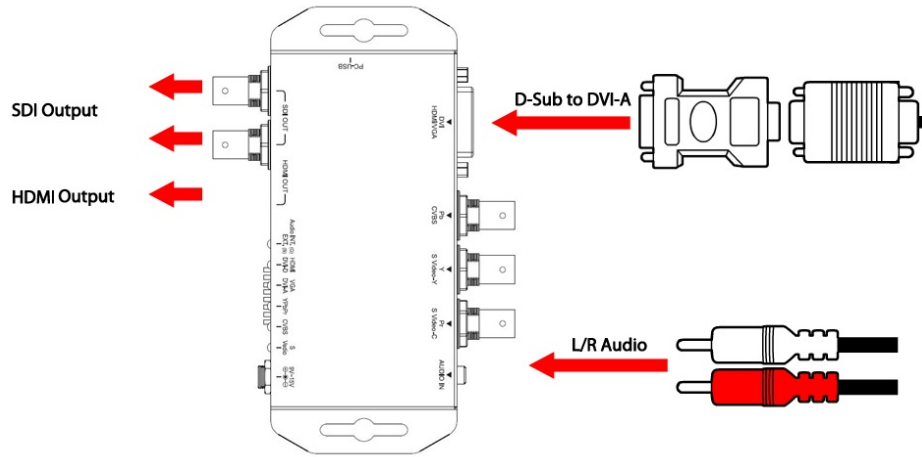
DVI-D + L/R Audio



	DVI-D	DVI-A	YPbPr	Cvbs	S-Video
<b>Locked</b>	●	○	○	○	○
<b>Un-locked</b>	●	○	○	○	○
<b>MicroVision</b>	●(Blinking)	○	○	○	○

2. DVI-A+ L/R Audio:

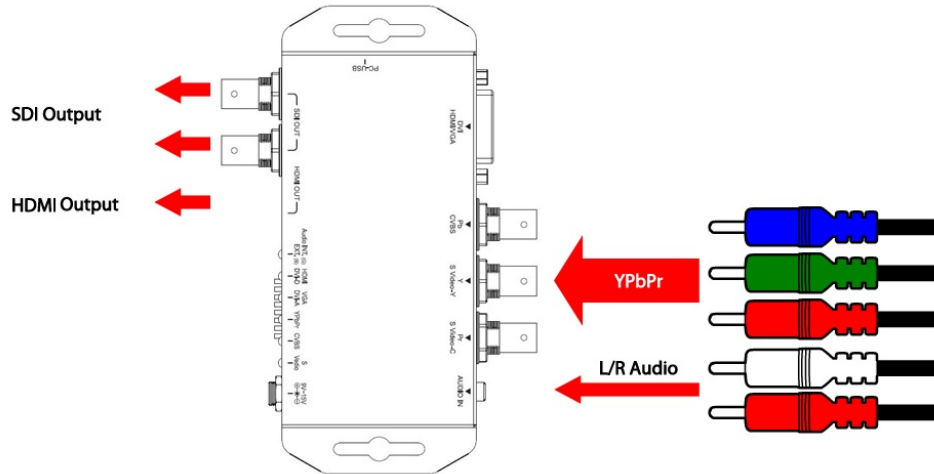
**DVI-A + L/R Audio**



	DVI-D	DVI-A	YPbPr	Cvbs	S-Video
<b>Locked</b>	○	●	○	○	○
<b>Un-locked</b>	○	●	○	○	○

3. YPbPr + L/R Audio:

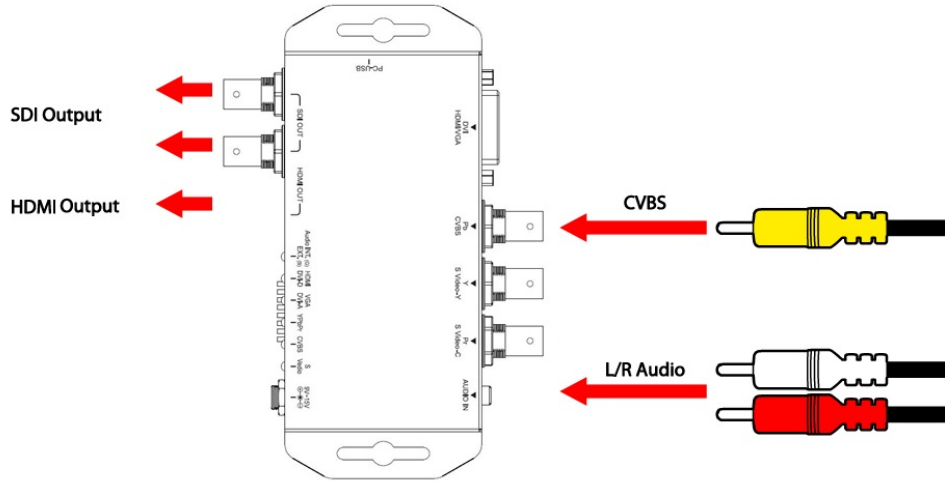
**YPbPr + L/R Audio**



	DVI-D	DVI-A	YPbPr	Cvbs	S-Video
<b>Locked</b>	○	○	●	○	○
<b>Un-locked</b>	○	○	●	○	○

4. Composite (CVBS) + L/R Audio:

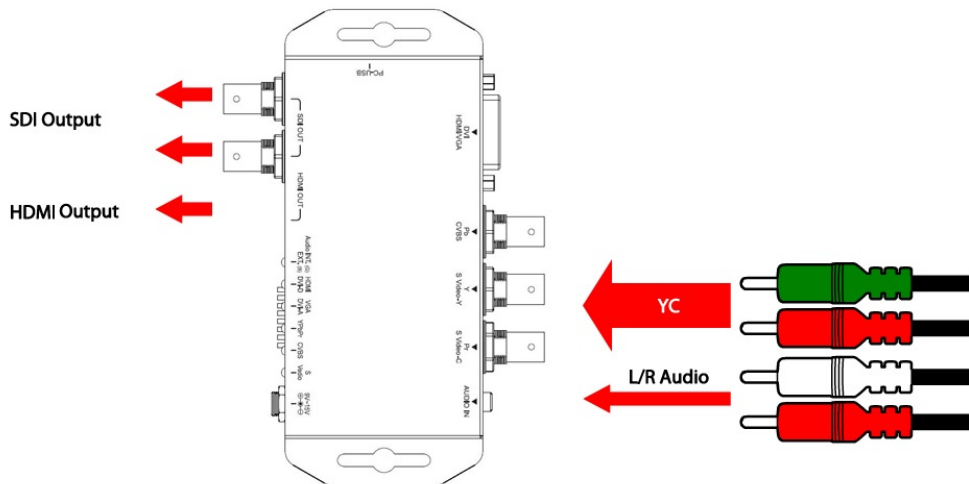
Composite(CVBS) + L/R Audio



	DVI-D	DVI-A	YPbPr	Cvbs	S-Video
<b>Locked</b>	<input type="radio"/>	<input type="radio"/>	<input type="radio"/>	<input checked="" type="radio"/>	<input type="radio"/>
<b>Un-locked</b>	<input type="radio"/>	<input type="radio"/>	<input type="radio"/>	<input checked="" type="radio"/>	<input type="radio"/>
<b>MicroVision</b>	<input type="radio"/>	<input type="radio"/>	<input type="radio"/>	<input checked="" type="radio"/> (Blinking)	<input type="radio"/>

5. S-VIDEO + L/R Audio

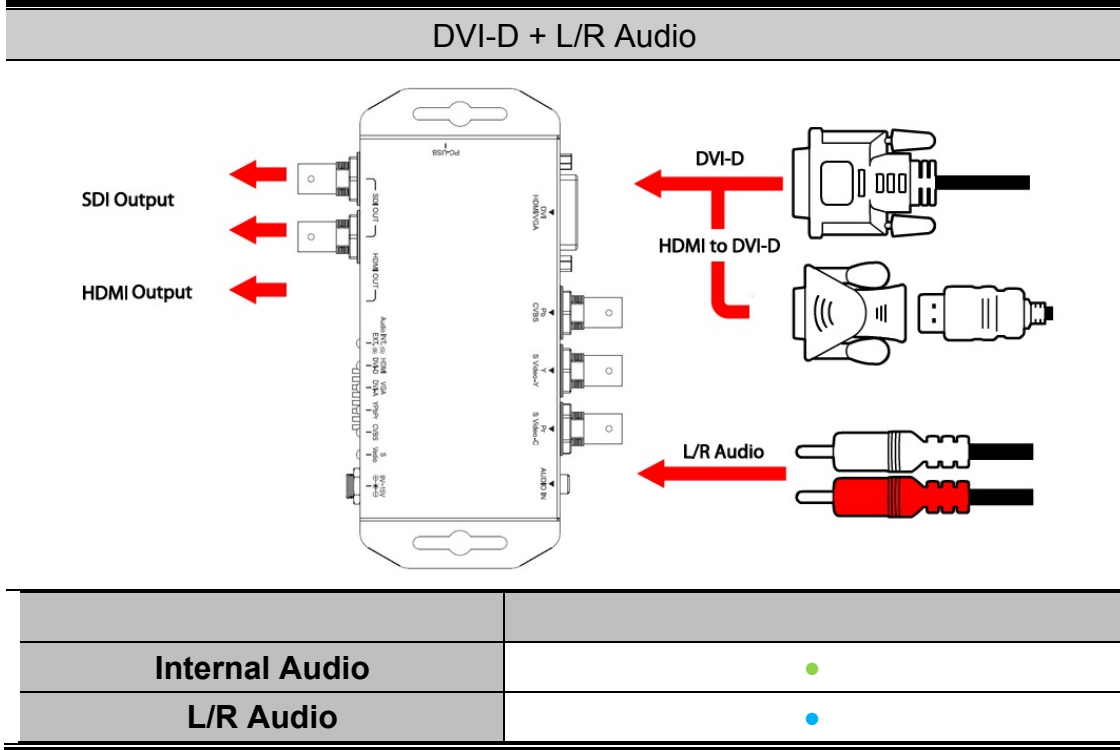
Composite(CVBS) + L/R Audio



	DVI-D	DVI-A	YPbPr	Cvbs	S-Video
<b>Locked</b>	<input type="radio"/>	<input type="radio"/>	<input type="radio"/>	<input type="radio"/>	<input checked="" type="radio"/>
<b>Un-locked</b>	<input type="radio"/>	<input type="radio"/>	<input type="radio"/>	<input type="radio"/>	<input checked="" type="radio"/>

<b>MicroVision</b>	○	○	○	○	●(Blinking)
--------------------	---	---	---	---	-------------

6. Audio Select:



**Installation**

SDI-MULTI2SDIPRO installation consists of the following:

1. Disconnect 12v DC adaptor to converter.
2. Connect Video Source to the Input Connector.
3. Connect Display Equipment to the output's connector
4. Connect the 12v DC adaptor to the converter.

**Package Contents**

The SDI-MULTI2SDIPRO package contains the following items:

- User Manual x 1
- 12v DC Adapter x 1
- SDI-MULTI2SDIPRO Converter x 1

## Specifications

DESCRIPTION	SDI-MULTI2SDIPRO
SDI Format	SD-SDI, HD-SDI & 3G-SDI
SDI Transition Rate	2.970Gb/s, 1.0485Gb/s and 270Mb/s
Audio Support	HDMI(DVI-D) : 8-Channel L/R Audio :a. only 2 channel and splitter to 8 channel (HDMI/SDI out) b. Input impedance = 10K. c. max input level(Vrms) = 10dBV (9V p-p), or 3.16 Vrms.
Re-Sample Clock	Auto Resample audio clock to 48Khz
Coaxial Cable Type	RG6/RG59(75Ω)
Cable Equalization	3G: 100m of RG6/ 86m of RG59 HD: 170m of RG6/ 120m of RG59 SD: 400m of RG6/ 280m of RG59 <i>*1 RG6: CANARE L-5CFB Cable / RG59: Belden 9275 Cable</i> <i>*2 Cable Length Performance: Depending on SDI Signal and Cable Quality</i>
Input Source	HDMI/VGA/YPbPr/CVBS/S-Video
Output Source	2 X SDI + 1 x HDMI (the same time)
Input Format Support	Appendix Table A
Output Format Support	Appendix Table A
Firmware Updates	Via Mini-USB
Output Connector	2 x BNC [SDI] 1 x HDMI
Input Connector	1 x BNC [SDI] 1 x DVI-I [DVI-D + DVI-A] 3 x BNC [YPbPr or YC + CVBS ] 1 x Phone Jack

BNC Connector	3G 75 $\Omega$ inter-locked socket
USB Connector	Mini-USB
Dipswitch	Output Format/Audio Source/Input Source
Housing	SECC
Dimension	L:153mm x W:63.3mm xH:26mm
Power Source	Power Adapter: AC 100 ~ 240 V/DC (+9 ~ 15 V)
Operation Temperature	0~50°C [32~114°F]
Storage Temperature	-20~+60°C

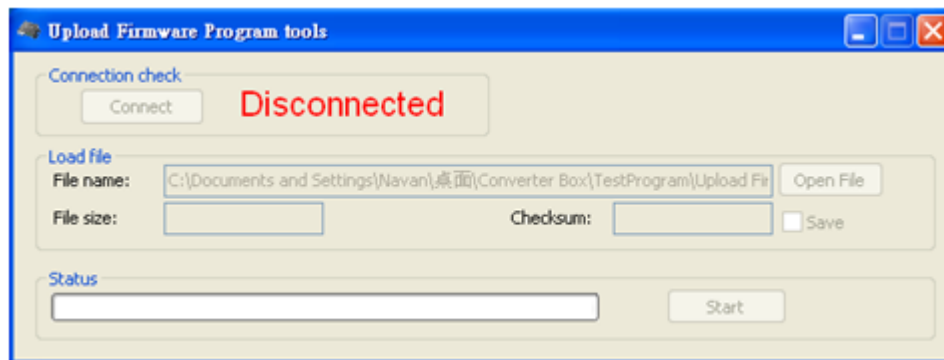
## Firmware Upload

Firmware is upgradable in the field using the integrated USB port

How to Firmware upgrade:

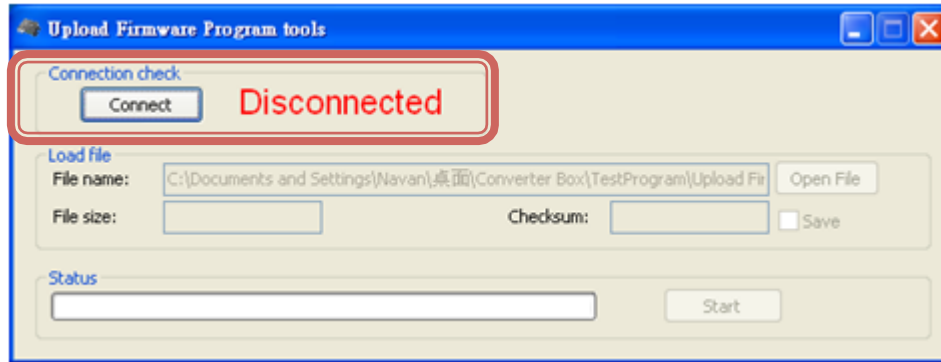
### Step 1.

Open Upload Firmware Program tools.exe and connect box to PC by USB Cable.



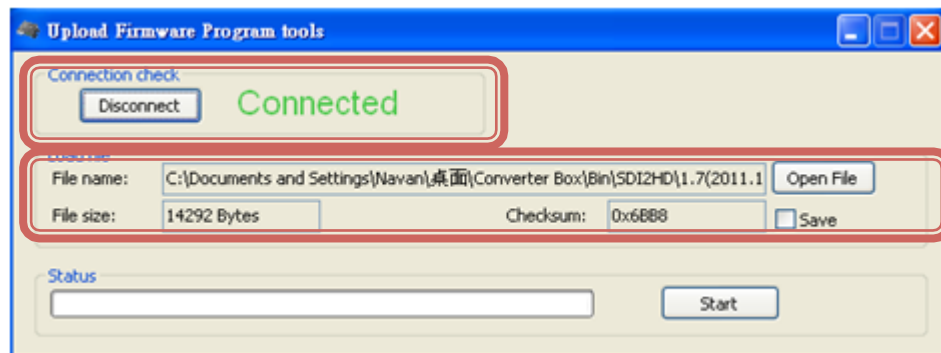
### Step 2.

Plug and un-plug “DC adapter” to power on/off the converter box (the connection check status will be changed to “Connect”)



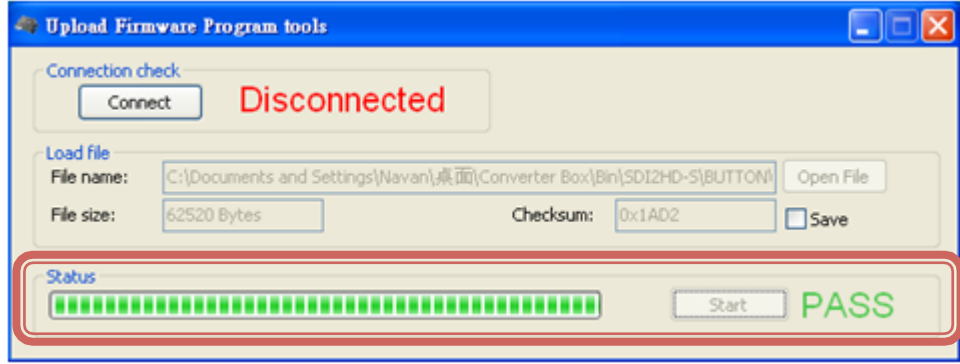
### Step 3.

Plug and un-plug “DC adapter” again (the connection check status will be changed to “Connected”) and Please click the Open File button to select the firmware bin file.



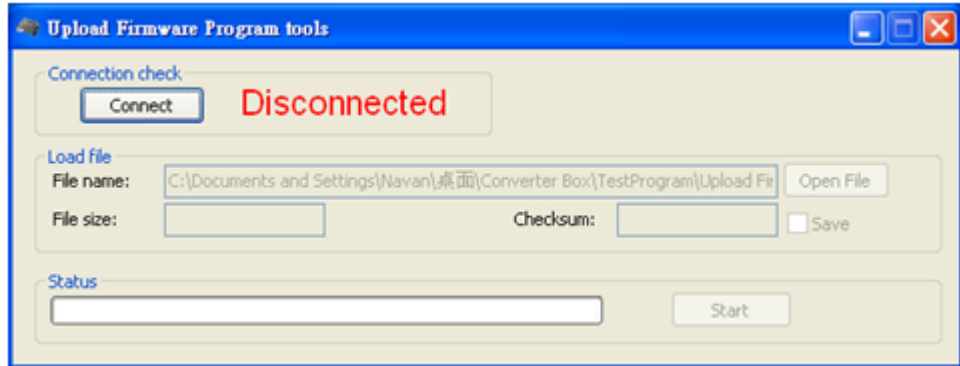
### Step 4.

Please click “Start’ Button to proceed with new firmware programming.  
The PASS message will appear when the procedures finished.



Step 5.

Close Upload Firmware Program tools



**Appendix Table A**

Support Input Format:

720x480i60	720x576i50	720x480 p60	720x576 p50
1280x720p60	1280x720p50	1920x1080i60	1920x1080i50
1920x1080p24	1920x1080p25	1920x1080p30	1920x1080p60
1920x1080p50			
640x350p85	640x400p85	720x400p85	640x480p60
640x480p72	640x480p75	640x480p85	800x600p56
800x600p60	800x600p72	800x600p75	800x600p85
848x480p60	1024x768p50	1024x768p59	1024x768p60
1024x768p70	1024x768p75	1024x768p85	1152x864p70
1152x864p75	1280x768pRB	1280x768p60	1280x768p75
1280x768p85	1280x800p60	1280x800p75	1280x800p85
1280x960p60	1280x960p75	1280x960p85	1280x1024p60



1280x1024p75	1280x1024p85	1360x768p60	1366x768p50
1366x768p60	1400x1050p50	1400x1050p59	1400x1050p60
1400x1050p75	1440x900p60	1440x900p75	1440x900p85
1600x1200p50	1600x1200p59	1600x1200p60	1600x1200pRB
1680x1050pRB	1680x1050p60	1920x1200pRB	2048x1052p60
2048x1080p50	2048x1080p59	2048x1080p60	

### Support Output Format:

HDMI Mode		
720x480 i60	720x480 i59.94	720x576 i50
1280x720 p60	1280x720 p59.94	1280x720 p50
1920x1080 i60	1920x1080 i59.94	1920x1080 i50
1920x1080 p60	1920x1080 p59.94	1920x1080 p50
1920x1080 p30	1920x1080 p29.97	1920x1080 p25
1920 x 1080 p24	1920 x 1080 p23.98	

### Update List

Data	Version	Command
2014.11.11	V1.0	1. Release

### Warranty

#### A. LIMITED WARRANTY

KanexPro™ warrants that (a) its products (the “Product”) will perform greatly in agreement with the accompanying written materials for a period of 36 months (3 full year) from the date of receipt and (b) that the product will be free from defects in materials and workmanship under normal use and service for a period of 3 years.

**B. CUSTOMER REMEDIES**

KanexPro entire liability and Customer's exclusive remedy shall be, at KanexPro option, either return of the price paid for the product, or repair or replacement of the Product that does not meet this Limited Warranty and which is returned to KanexPro with a copy of customers' receipt. This Limited Warranty is void if failure of the Product has resulted from accident, abuse, or misapplication. Any replacement Product will be warranted for the remainder of the original warranty period of 1 year, whichever is longer.

**C. NO OTHER WARRANTIES**

To the maximum extent permitted by applicable law, KanexPro disclaims all other warranties, either express or implied, including, but not limited to implied warranties of merchantability and fitness for a particular purpose, with regard to the product and any related written materials. This limited warranty gives customers specific legal rights. Customers may have other rights depending on the jurisdiction.

**D. NO LIABILITY FOR DAMAGES**

To the maximum extent permitted by applicable law, in no event shall KanexPro be liable for any damages whatsoever (including without limitation, special, incidental, consequential, or indirect damages for personal injury, loss of business profits, business interruption, loss of business information, or any other pecuniary loss) arising out of the use of or inability to use this product, even if KanexPro has been advised of the possibility of such damages.

**KanexPro**<sup>™</sup>

Brea, California

KanexPro.com